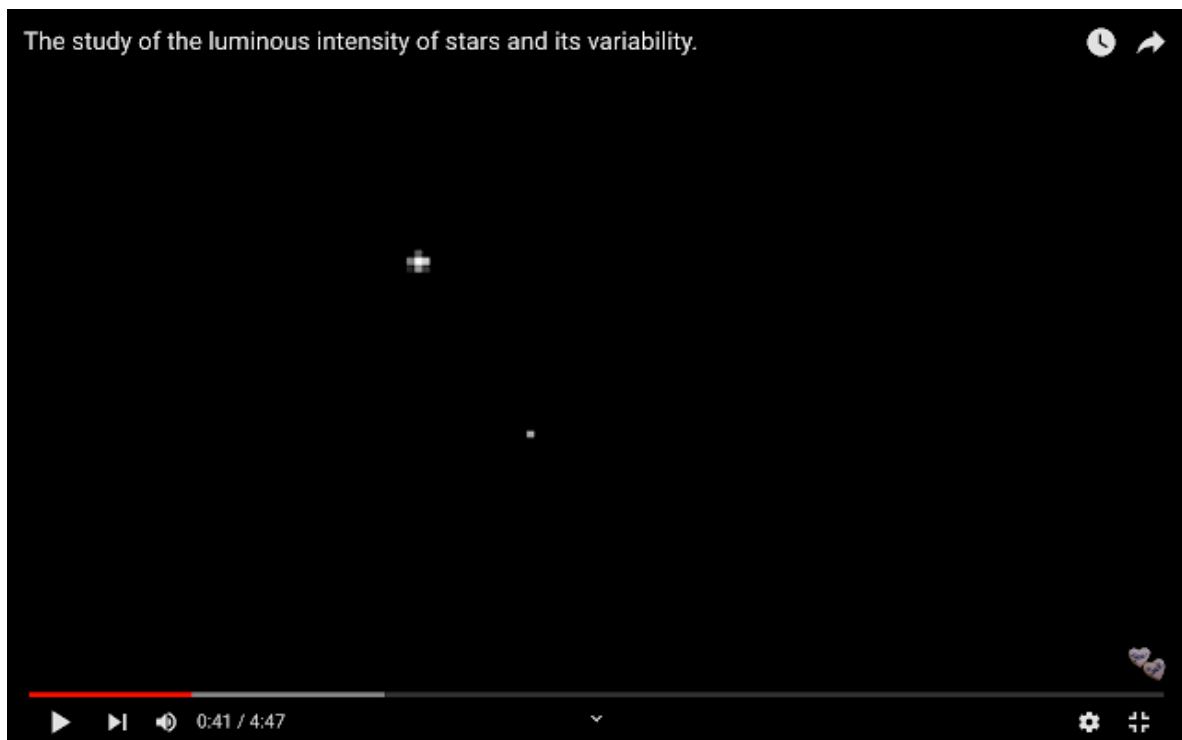


The luminous intensity of stars and its variability

In astronomy, the width of the function used: of a star on an image makes it possible to calculate the value of atmospheric turbulence.

Step 1 [youtube.com/shorts/5p--6zy9n_4](https://www.youtube.com/shorts/5p--6zy9n_4)



Step 2 As part of a complete work to follow with many samples on the re-work starting at Pdf N ° 48. (2021) Tree data structure Tab

youtu.be/vCPd3xkGgpw (+ Pdf N° 107)

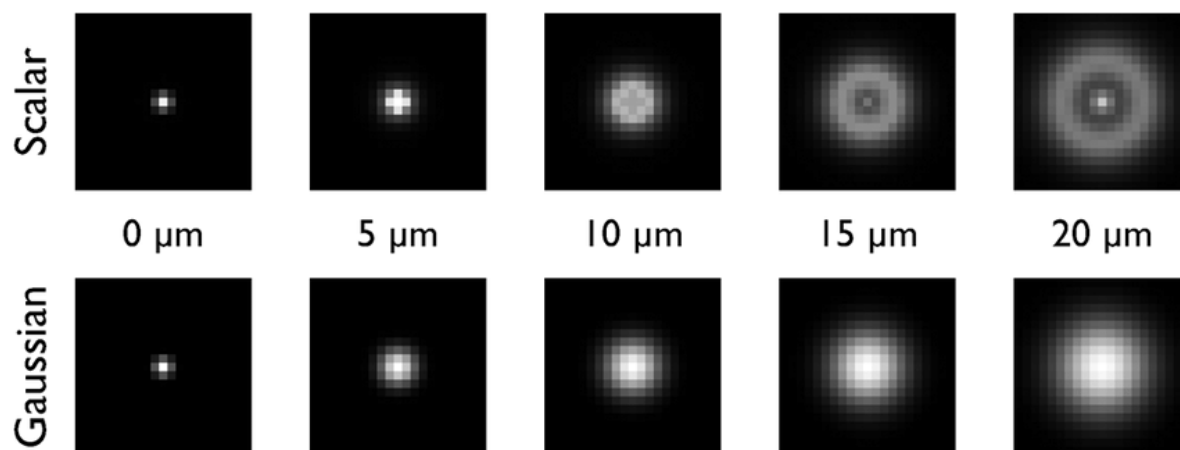
Along with the transparency of the sky, this is one of the parameters used by astronomers.

These two parameters depend on temperature, pressure, wind and humidity as well as their variations.

As far as observation is concerned, atmospheric disturbances dominate over diffraction effects.

First video under the Gif 2+3

veronicaindream.blogspot.com/2019/12/thermal-radiation-distance-to.html



Posted by [Veronica IN DREAM](#)

[Ask me](#)

Restrictive License. All Rights Reserved by veronicaindream.space

Oct. 30 2021