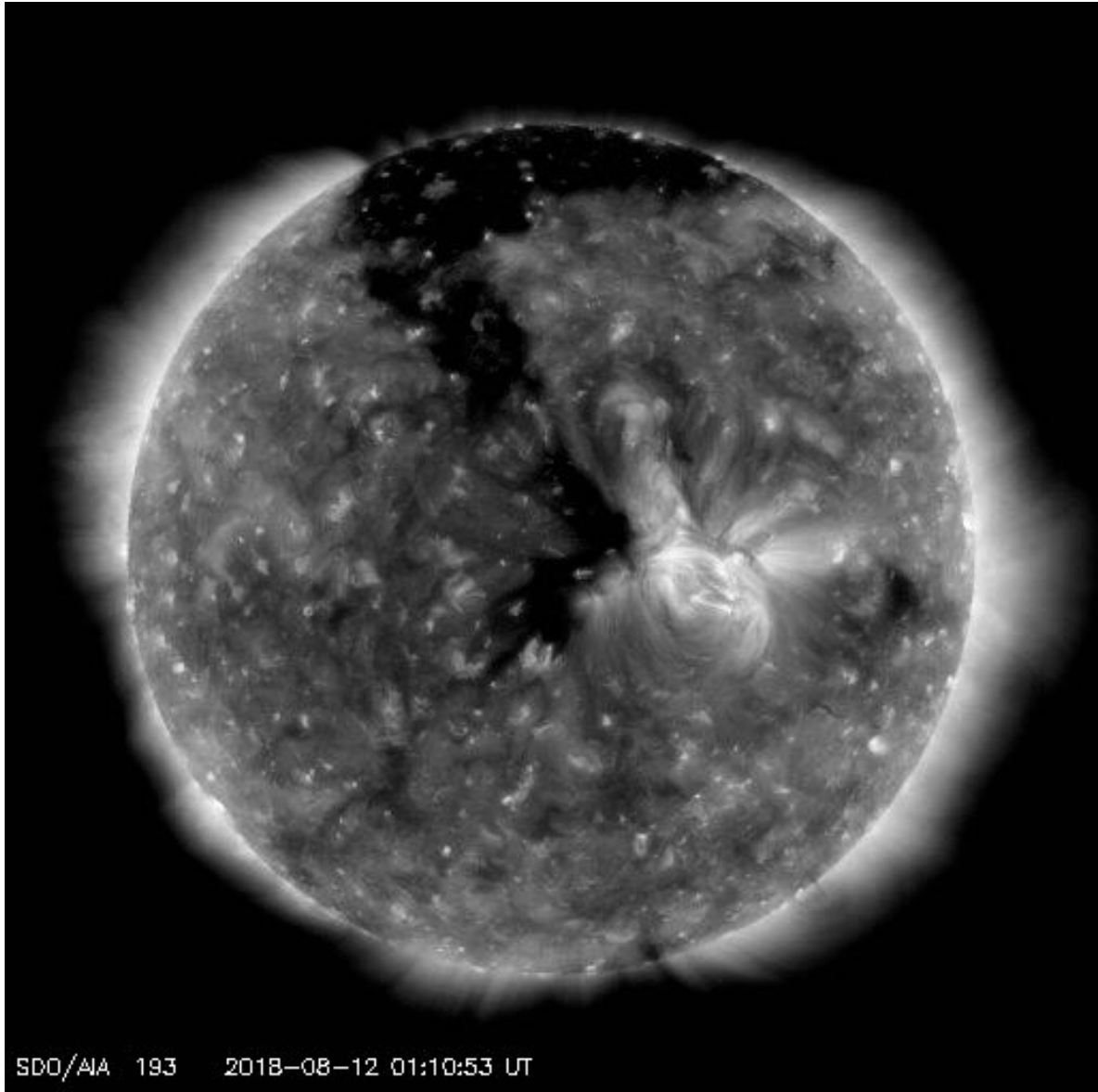


Wednesday, August 15, 2018



As you can see in my Twitter on the image provided by Nasa, a coronal hole originates from the Sun's north pole.

The coronal hole however has a southward extension that follows a very long and narrow path all the way to the solar equator.

Coronal hole faces Earth.

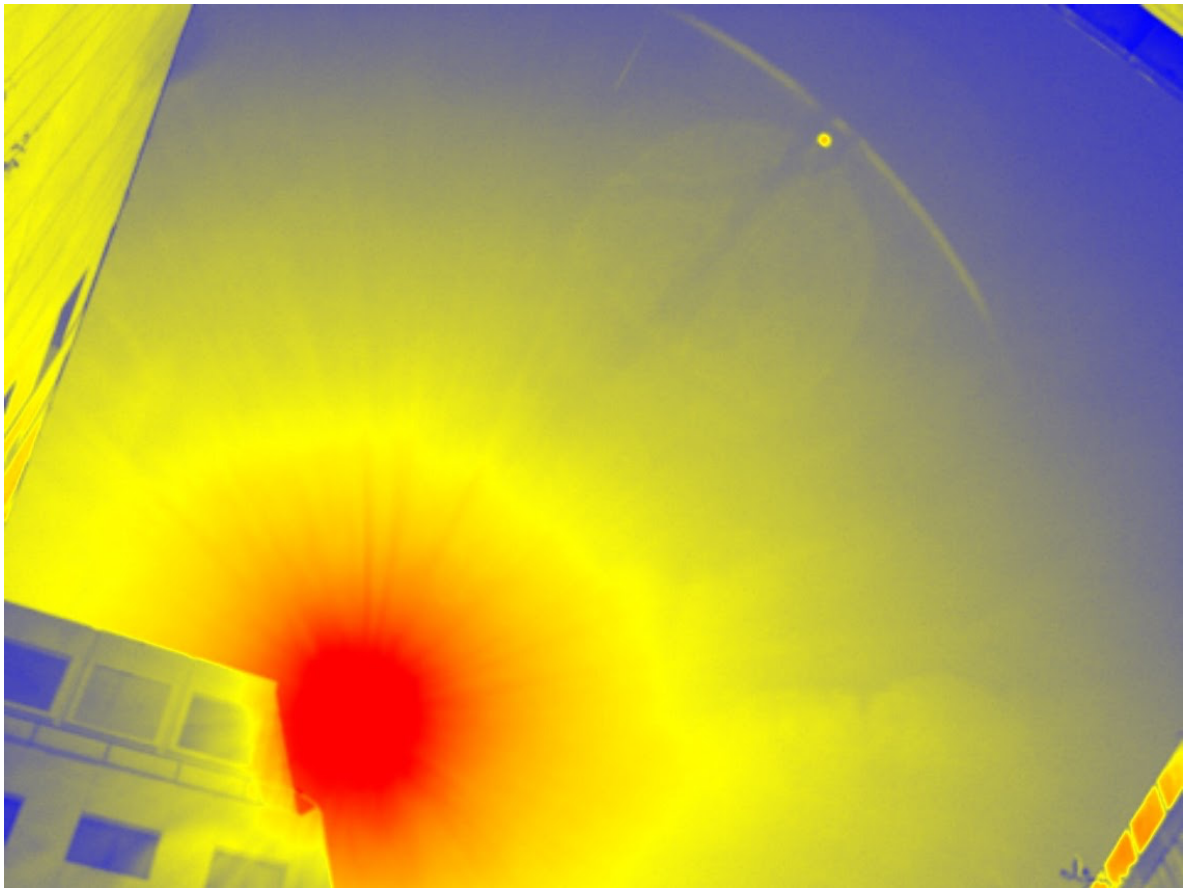
We re approaching solar minimum so sunspots and solar flares have become a rare sight.

Even coronal holes have migrated to higher latitudes but today as a southward extension of the northern hemisphere polar coronal hole faces our planet.

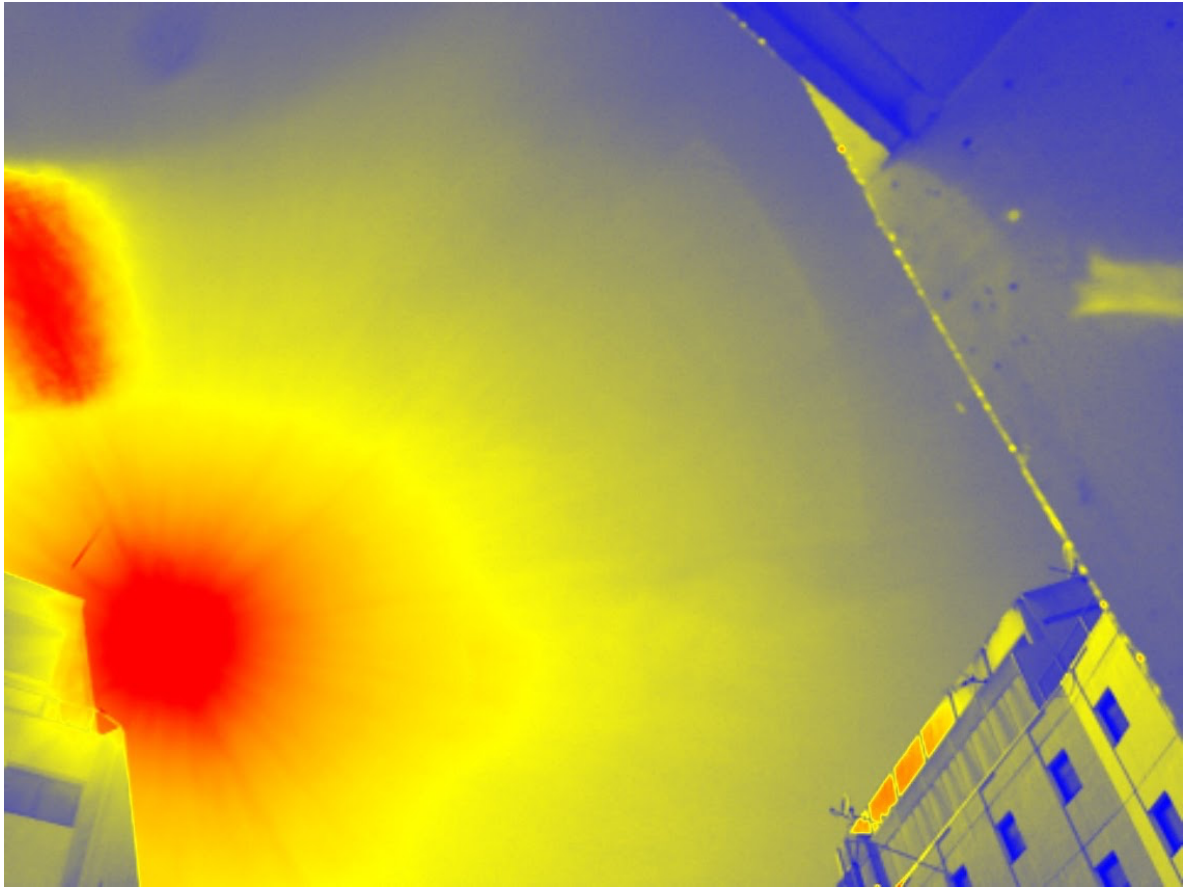
This means solar wind flowing this coronal hole had a chance to arrive at our planet August 15.

That means not expect geomagnetic storm conditions but active geomagnetic conditions (Kp4) are possible.

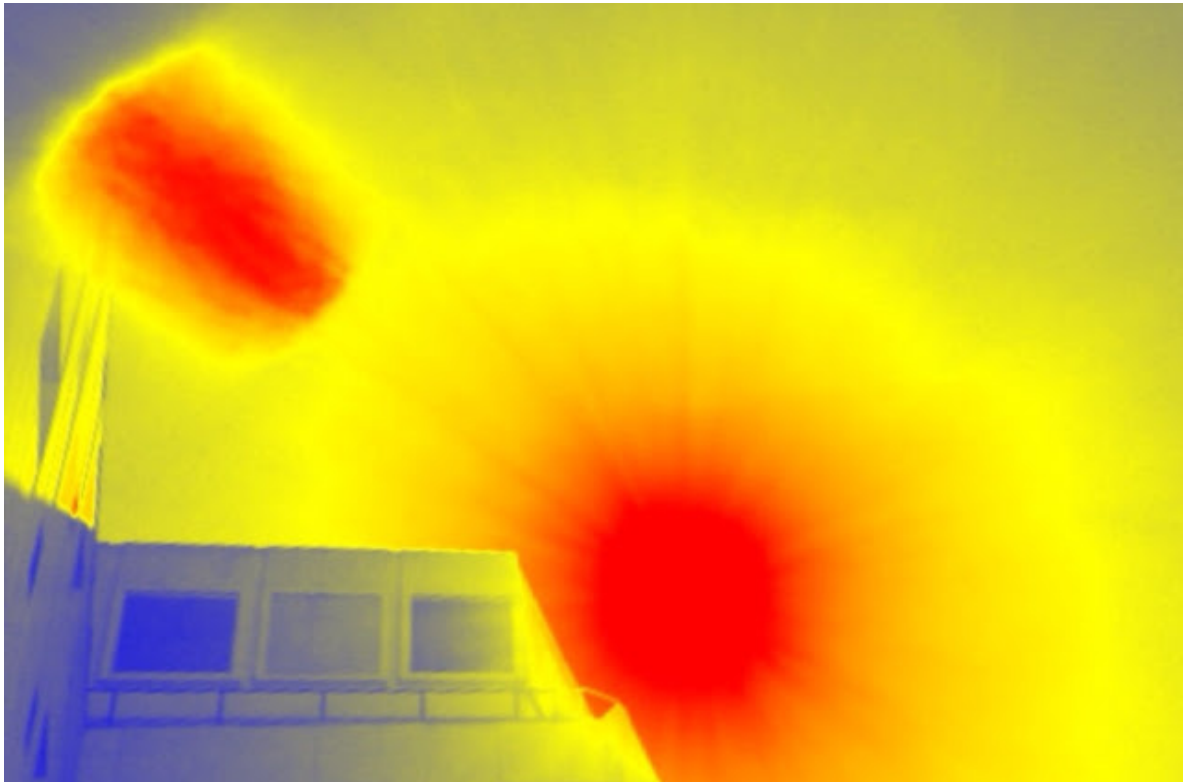
Active geomagnetic conditions (Kp4)
Threshold Reached: 23:59 UTC.



17.10pm + 1



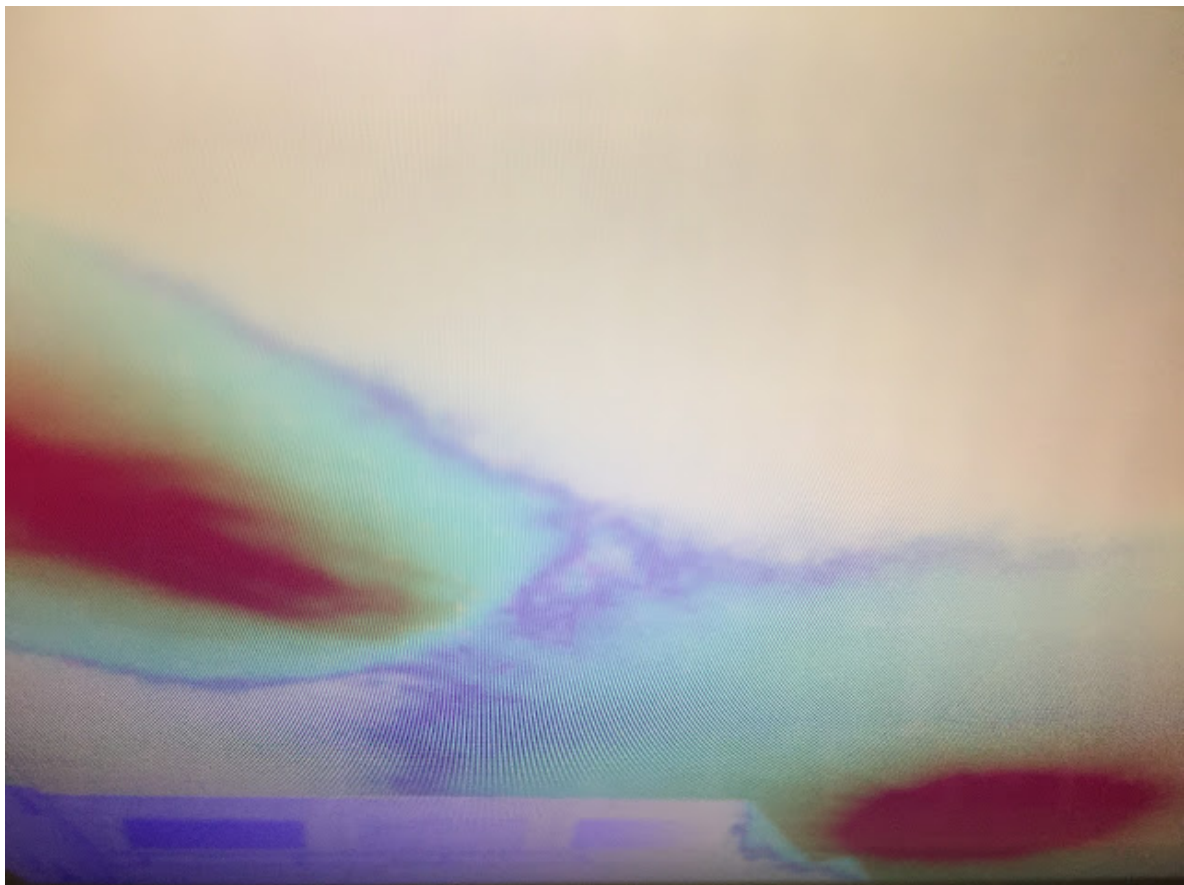
17.11pm + 1



17.20pm + 1

First post as Optical Astronomy, +exactly is: first Spectropolarimetry, part of my **thesis**

I using the screen of my computer + the angle according to the effect of birefringence to obtain the detail of the image: the point between the solar corona and the ejection.



+ 1

Posted by [Veronica IN DREAM](#) at 9:09 PM